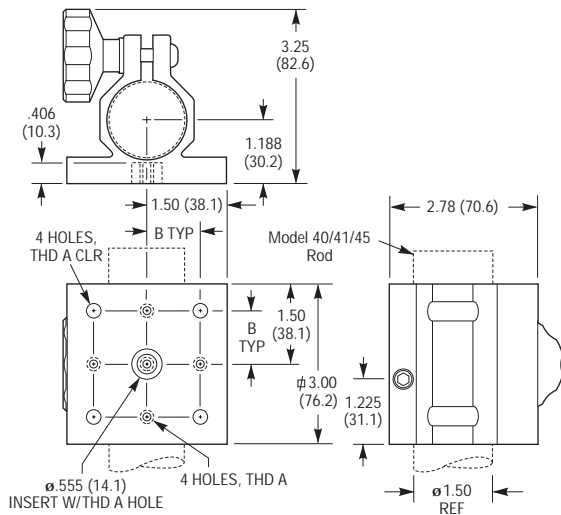


Model (Metric)	Thread		Dimension [in. (mm)]	
	A	B		
340-RC (M-340-RC)	1/4-20 (M6)		1.00	(25.0)
370-RC (M-370-RC)	1/4-20 (M6)		1.00	(25.0)

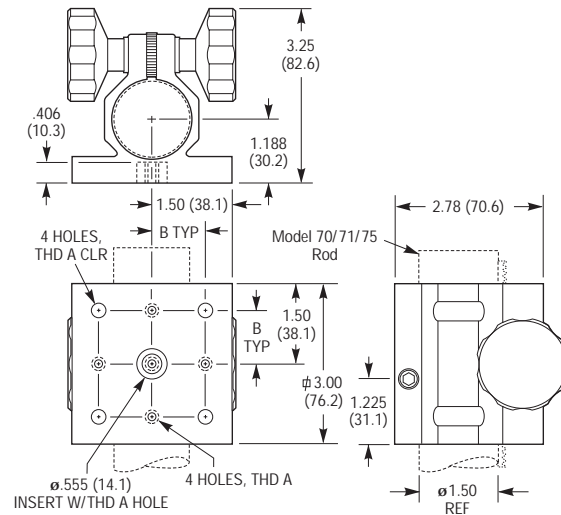
Ordering Information

Model (Metric)	Description	For Rod Models
340-RC (M-340-RC)	Rod Clamp	40, 41, 45
370-RC (M-370-RC)	Rack-and-Pinion Rod Clamp	70, 71, 75

Model 340-RC



Model 370-RC



CAD See our website for CAD files

Rod Platforms

Key Features

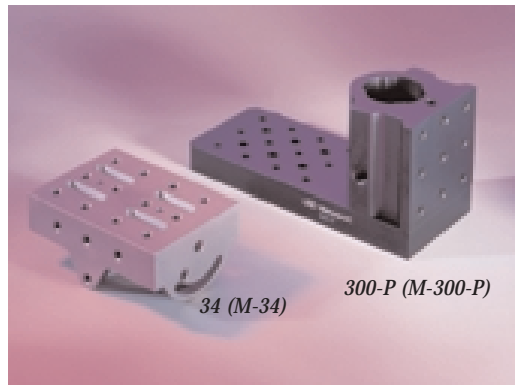
(Model 34 Rotatable Platform)

- Can be rotated over 360° in continuous 90° steps
- Five mounting surfaces
- Stackable for compound-angle positioning

Key Features

(Model 300-P Rod Platform)

- Three mounting surfaces
- Smooth, wobble-free height adjustment: rigid lock-down
- Two-piece design for increased versatility



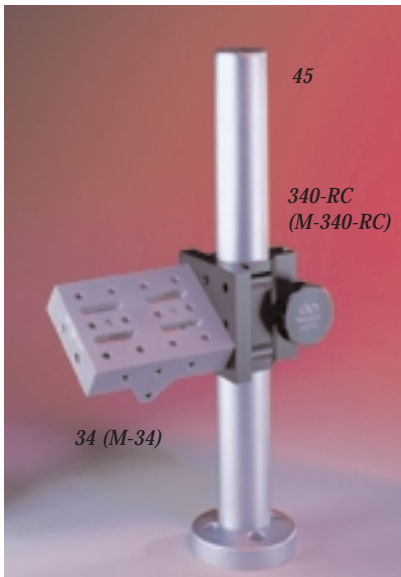
Model 34 Rotatable Platforms

provide exceptional versatility for mounting components at arbitrary angles. One end of the platform has a circular slot, centered on a clearance hole, to provide 360° positioning in continuous 90° steps when attached with two bolts. This allows you to position the mounting surface at any angle before locking it in place. The platforms may also be joined end-to-end for added length, or side-

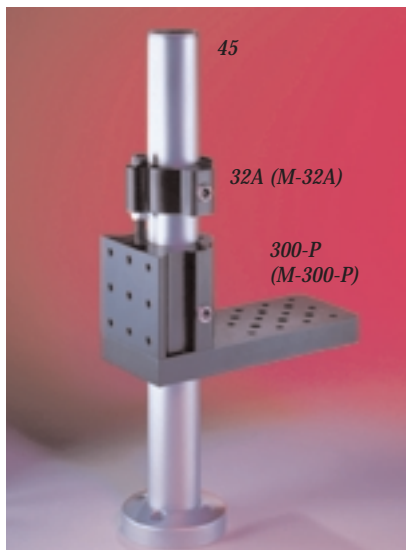
to-end to achieve compound mounting angles. Model 34 is especially useful with our Model 340-RC and 370-RC Clamps.

The 300-P rod platform provides a wide variety of component mounting variations. Constructed of aluminum, it has three machined mounting surfaces: one parallel to the post axis and two perpendicular to it.

The platform clamp is double-bored, forming two line contacts along the bore to assure wobble-free clamping when the locking screw is tightened. It slides smoothly on Models 40, 41, or 45 Rods*.



Model 34 shown mounted to a Model 340-RC Clamp and Model 45 Rod



Platforms can be oriented as shown or inverted for extra height.

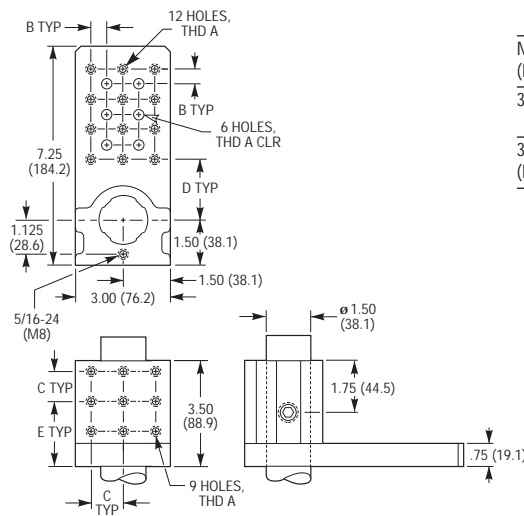
The Model 32A Fine Positioner provides fine height control. Firmly attaching to the rod, height adjustment is provided via a capscrew that engages a tapped hole in either end of the mounting platform. The capscrew runs in ball bearings and provides a height adjustment range of 0.7 in. (18 mm).

Ordering Information

Model (Metric)	Description
34 (M-34)	Rotatable Platform
300-P (M-300-P)	Rod Platform*
32A (M-32A)	Fine Positioner*

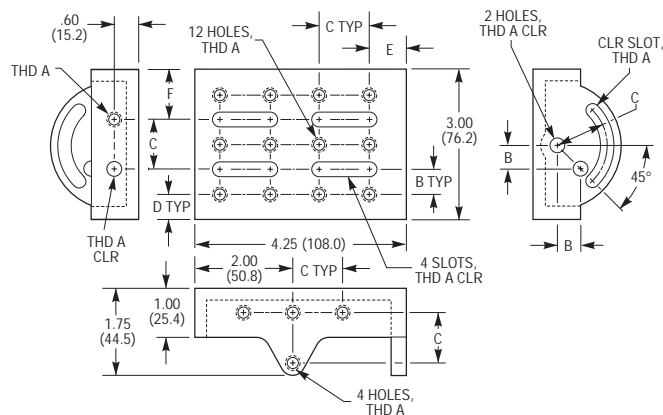
* Order rod separately.

Model 300-P



Model (Metric)	Thread		Dimension [in. (mm)]			
	A	B	C	D	E	F
34 (M-34)	1/4-20 (M6)	0.500 (12.5)	1.00 (25.0)	0.50 (13.1)	0.75 (19.7)	1.00 (25.6)
300-P (M-300-P)	1/4-20 (M6)	0.500 (12.5)	1.00 (25.0)	2.00 (50.8)	2.13 (54.1)	2.13 (54.1)

Model 34



CAD See our website for CAD files